



BUILD WITH CONFIDENCE

Why Build with Trico...

- Certified Master Home Builder, Building in Calgary Since 1988
- Member Of The Alberta New Home Warranty Program Since 1993
- Accents Design Studio open exclusively to our customers to select interior colours and options
- In house Professional Service & Warranty Team
- Homeowner Manuals to help our Customers deal with scheduled maintenance items
- Guaranteed "Trade-in Program" for your Existing Home
- Legal fees included through designated law firm

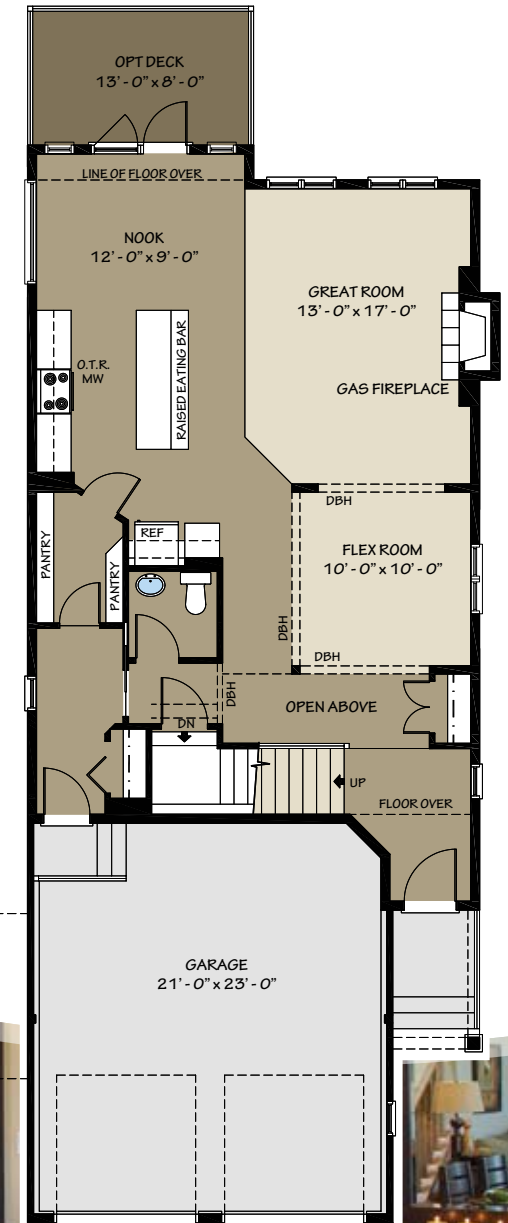
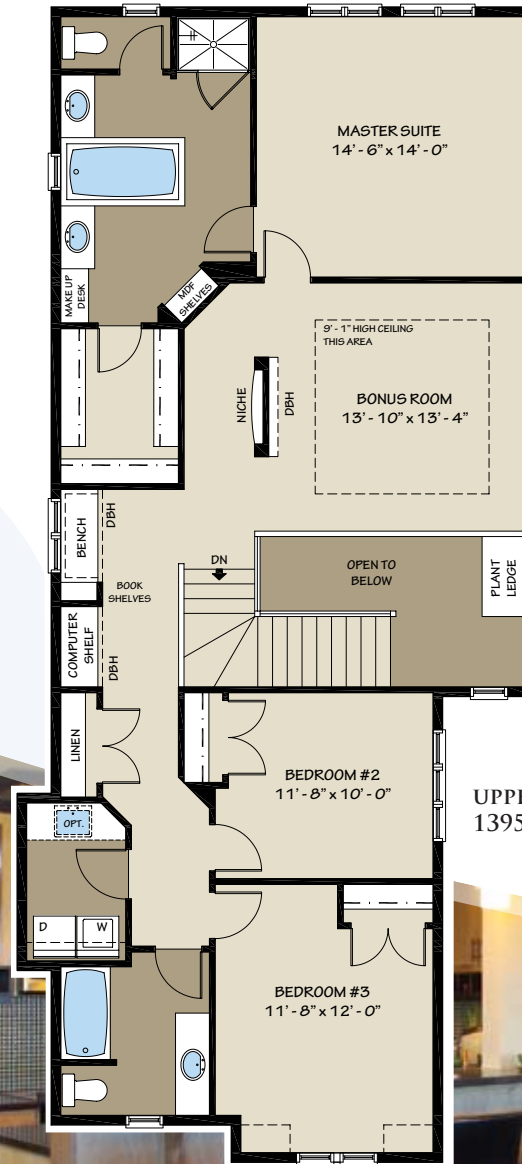


TRICO HOMES



# THE KENNEDY

2420 SQ.FT.



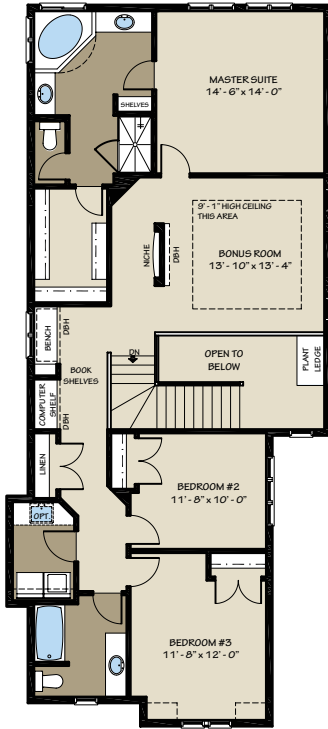
26 WIDTH TWO-STORY

Renderings are artist's conceptions only and may vary by community and lot selection. Prices, floorplans, specifications and dimensions are approximate and subject to change without notice. E.O.E. © All rights reserved, including the right if reproduction in the whole or in part without the permission of Trico Homes.



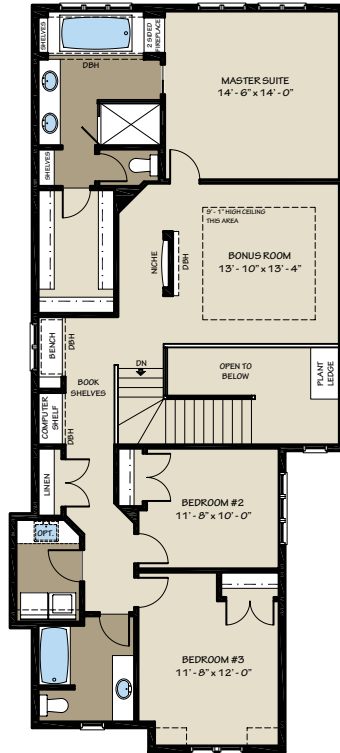
THE FOLLOWING LIST IS JUST SOME OF THE VALUE ADDED FEATURES IN OUR CELEBRATION SPECIFICATIONS BUILT INTO EVERY TRICO HOME.

ENSUITE OPTION 1



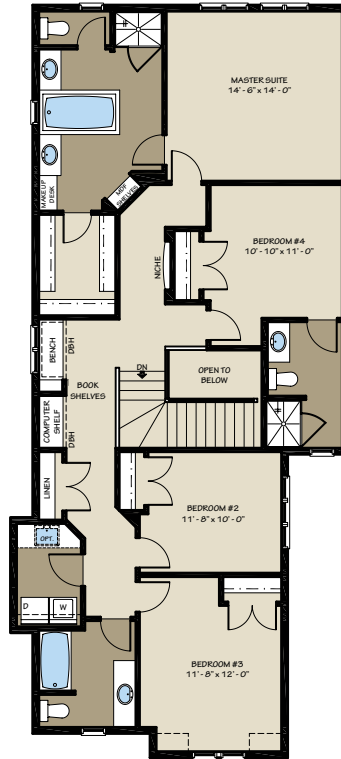
UPPER  
1395 sq.ft.

ENSUITE OPTION 2



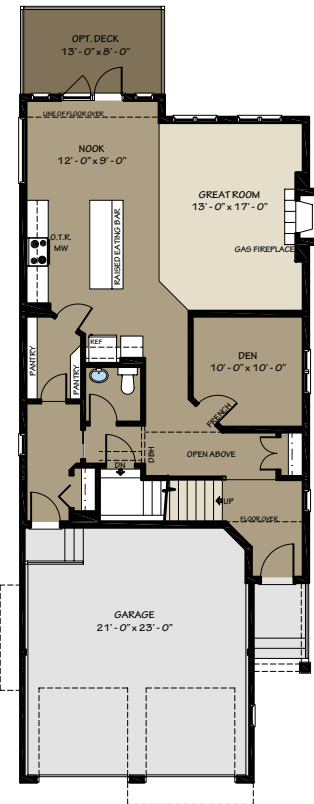
UPPER  
1395 sq.ft.

4 BEDROOM OPTION



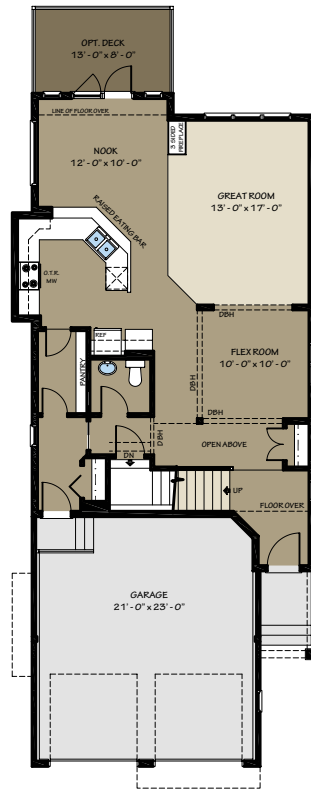
UPPER  
1448 sq.ft.

DEN OPTION



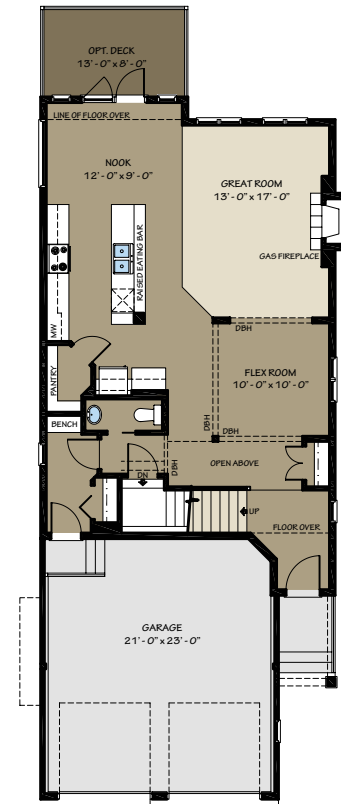
MAIN  
1025 sq.ft.

KITCHEN OPTION 1



MAIN  
1037 sq.ft.

KITCHEN OPTION 2



MAIN  
1025 sq.ft.



KITCHEN

- ✓ Garbarator Rough-in
- ✓ Pinot White, Oak or Flat Panel Maple Cabinets
- ✓ Self Cleaning Range
- ✓ Moen Brand Single Lever Plumbing Fixtures
- ✓ One GFI Outlet in Kitchen



BATHROOMS

- ✓ 40" High Bathroom Mirrors with Polished Edges Running Length of Vanity Top
- ✓ Main Bath Medicine Cabinet with Door to Match Bathroom Cabinets
- ✓ GFI Circuit for All Bathrooms
- ✓ Moen Brand Single Lever Plumbing Fixtures



INTERIOR FINISHES

- ✓ 1 Primer and 2 Finish Coats of Single Colour General Paint Code (0 To 3) on Interior Walls
- ✓ Baseboards, Door, & Window Jambs, Casings & Interior Doors to be Painted in Semi-gloss White
- ✓ Paint Grade Colonist Style Doors
- ✓ 2 1/4" Door Casings
- ✓ 3 1/4" Baseboards
- ✓ 2 1/4" Window Casings
- ✓ Freeslide No Maintenance and Factory Powder Coated Wire Closet Shelves
- ✓ Hardwood as per Plan Selected from Builder Selections \*
- ✓ Brushed Chrome Hardware Throughout, Privacy Locks to Master Bedroom and Bathrooms
- ✓ Decora Switches & Plugs
- ✓ Enlarged Basement Windows (48 X 32)
- ✓ 7 lb. Underlay On All Carpet Areas
- ✓ 3 Telephone Jacks  
(1 Additional Jack for Plans with Bonus Room)
- ✓ 2 Cable Outlets  
(1 Additional Jack For Plans with Bonus Room)
- ✓ Central Vacuum System Rough-in
- ✓ Garage Door Opener with Two Controls \*
- ✓ Tile Flooring in Laundry, Main & Ensuite \*
- ✓ Standard Railing as per Plan \*



STRUCTURE

- ✓ 9' Main Floor Heights as per Plan \*
- ✓ Engineered Floor And Truss Systems
- ✓ Exterior Walls Framed 16" On Center
- ✓ Sol-R Gain Windows
- ✓ R-12 Fiberglass Batt Insulation on Basement Exterior Walls
- ✓ R-40 Insulated Ceilings
- ✓ 3 Piece Rough In Plumbing (Basement)



ELECTRICAL AND MECHANICAL

- ✓ 50 Gallon High Efficiency Hot Water Tank
- ✓ 92% High Efficiency Gas Furnance with a Drum Humidifier
- ✓ Carbon Monoxide Hard Wired Smoke Detectors on Upper Level
- ✓ Programmable Energy Star Thermostat
- ✓ Fireplace as per Plan



EXTERIOR

- ✓ 30 Year Cambridge Roof Shingles (Area Specific)
- ✓ 2 Exterior Water Proof Plugs
- ✓ Fiberglass Exterior Doors Complete with 12" Transom Over as per Standard Plan \*

\* Does not apply to homes without an attached garage.